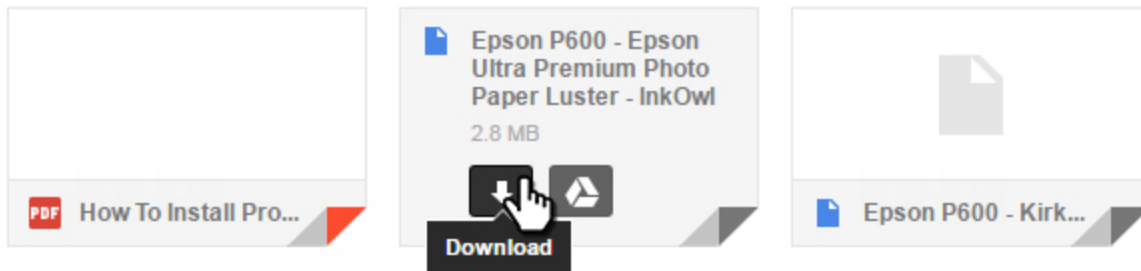


How to Use a custom profile

Step 1: Download and move the profile

Naturally, the first step is the download the profiles that we emailed to you.

3 Attachments



Once downloaded, you will need to move them to the folder on your computer where all of your profiles are stored. The location of the folder will depend on what version of Windows or Apple OS you are running. Refer to the list below to find where your profiles are stored:

Windows 98/ME

C:\Windows\System\Color

Windows XP/Vista/7/8/10

C:\Windows\System32\Spool\Drivers\Color

Mac OS X

Username/Library/ColorSync/Profiles

or

HD/Library/ColorSync/Profiles

Apple's OS X 10.7

OS X 10.7 requires a little more work: the user library, where the profiles are installed is by default hidden and only someone with Admin privileges can access it. That is why a lot of programs that enable custom color management (like Adobe Photoshop) can have difficulty “seeing” your computer’s profiles.

A possible workaround is to hold down the *option* key while you navigate to “Go” on the menu bar, click on the ColorSync folder, and click again on the Profiles folder. This makes the folder temporarily visible. For your convenience, you may want to drag the folder to your “Favorites” sidebar to expedite future profile installations.

Step 2: Apply the profile to your prints

NOTE: It is important to understand that in order to use a profile you need a program that grants you control over color-management. Adobe Photoshop® and Adobe Illustrator® as well as CorelDRAW® and Corel PHOTO-PAINT® enable you to use profiles, as do many RIP printing software. If you do not have a program that allows you to apply profiles then you must acquire one to continue.

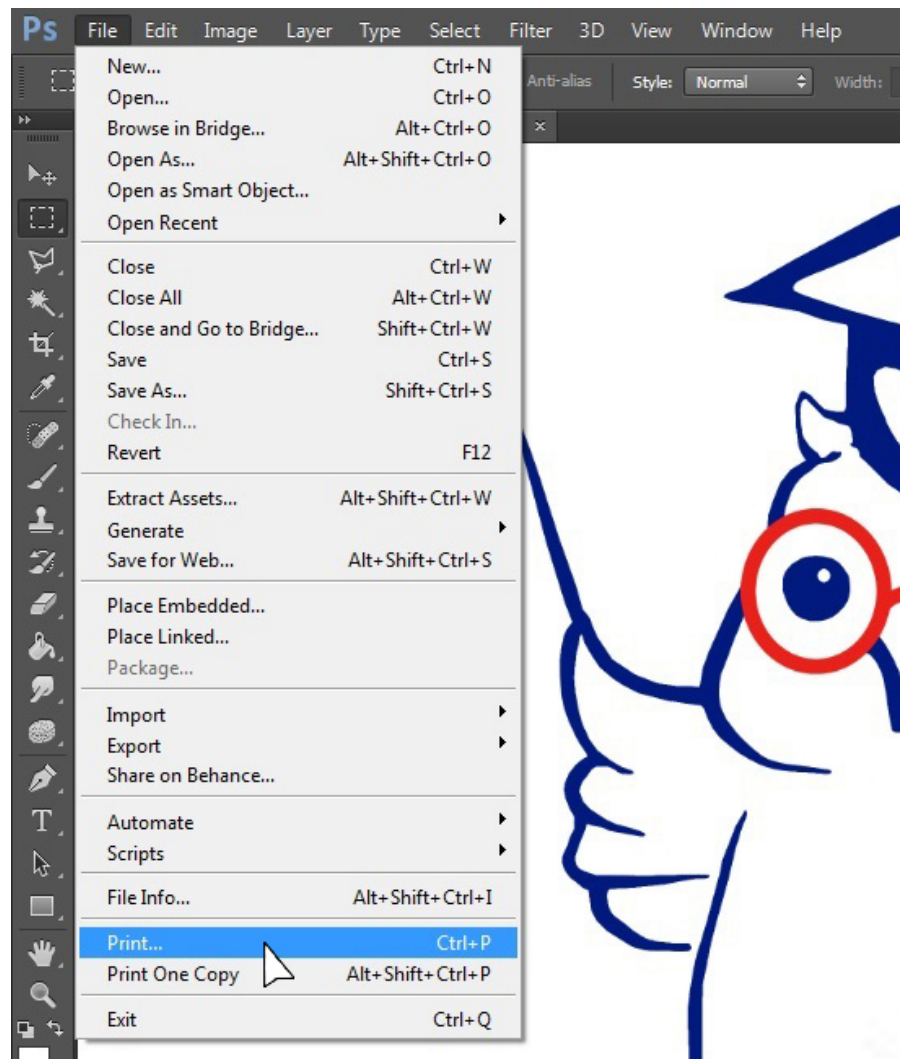
For RIP software

As far as using a profile in a RIP software goes, we recommend consulting the manual associated with the RIP software you are using as there are many out and the interface can be quite different from one to the next. The manual should indicate if it is possible and how to apply profiles.

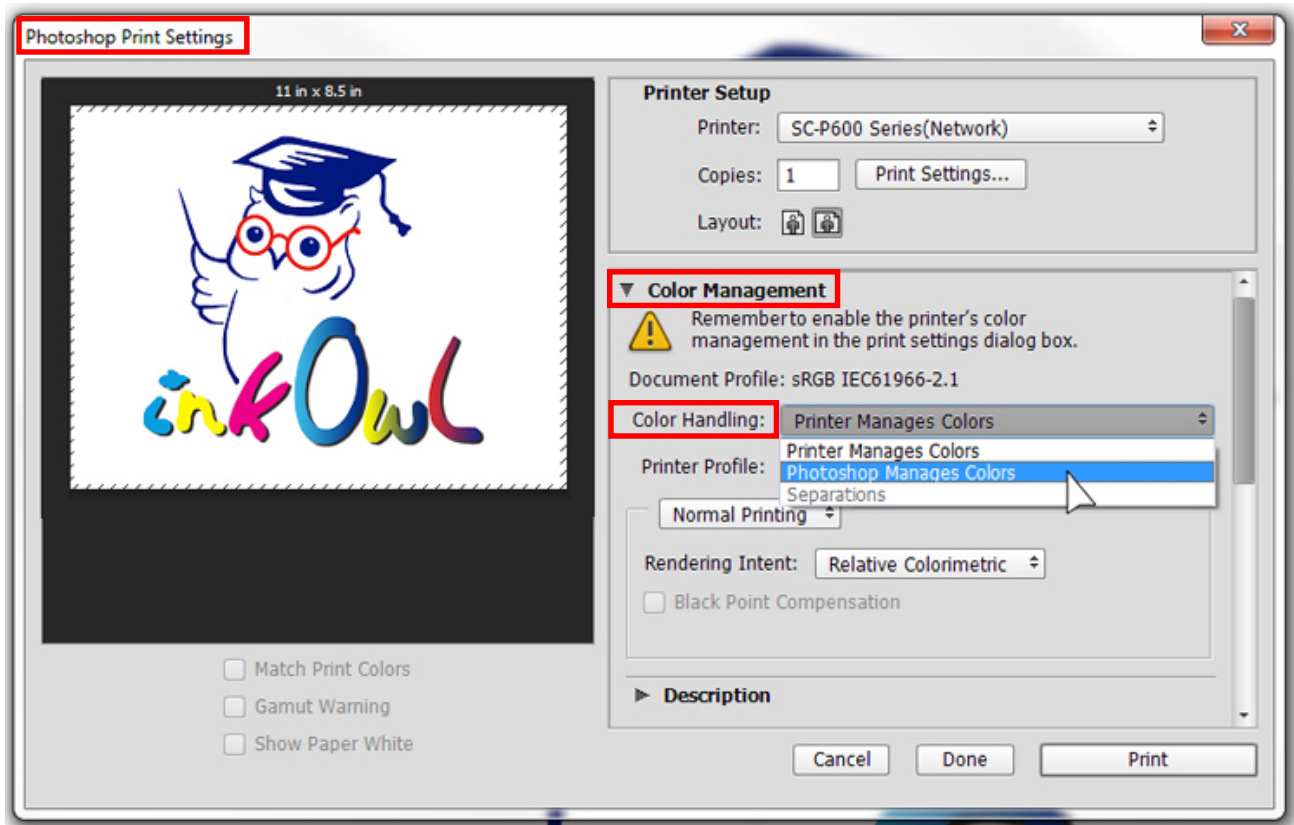
For Photoshop® and Illustrator®

In this section, we will show how to use ICC Profiles with Adobe Photoshop® CC. Older (and newer) versions of Photoshop® work pretty much the same and Photoshop® and Illustrator® have very similar GUI's so this process can be roughly applied to Illustrator's various versions as well.

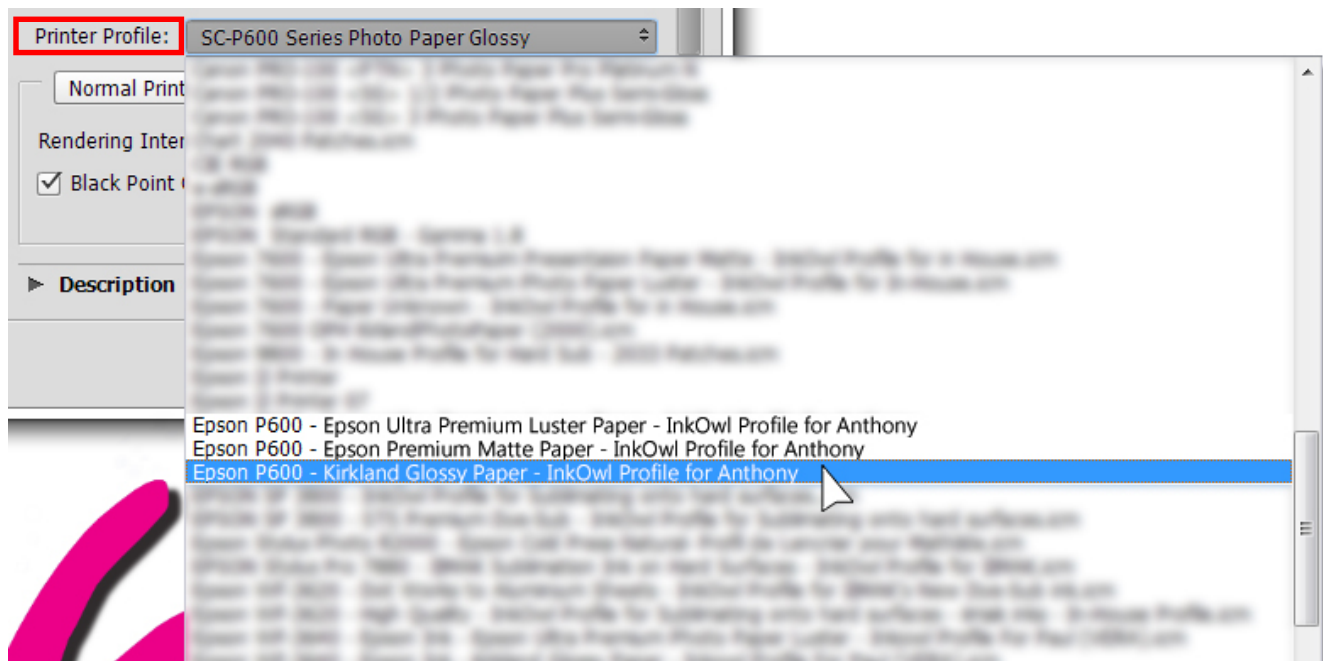
1. Open the picture you wish to print in Photoshop® (or Illustrator®)
2. Under "File" choose "Print..."



- On the *Photoshop Print Settings* under **Color Management**, **Color Handling** select “Photoshop Manages colors”



- Under **Printer Profile** select the profile you wish to use. *Reminder, a profile will only show up on this list if it has been placed into the system folder for profiles for your OS.*

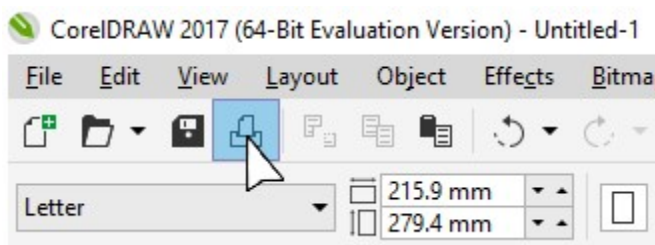


- Press print! The profile will be applied to your work as it is sent out to the printer.

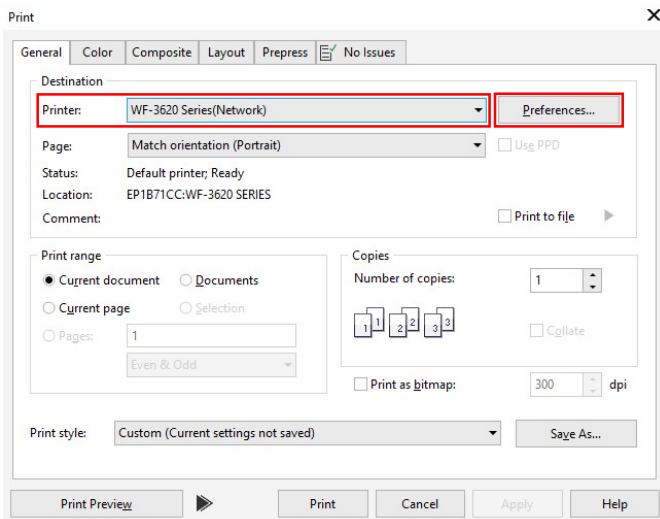
For CorelDRAW® and Corel PHOTO-PAINT®

In this section, we will show how to use ICC Profiles with CorelDRAW® 2017. Older (and newer) versions of CorelDRAW® work pretty much the same and CorelDRAW® and Corel PHOTO-PAINT® have very similar GUI's so this process can be also be used for Corel PHOTO-PAINT's various versions as well.

1. Open the image/file you wish to print in CorelDRAW® (or Corel PHOTO-PAINT®)
2. On the top left-hand side of the window press the *printer button*.

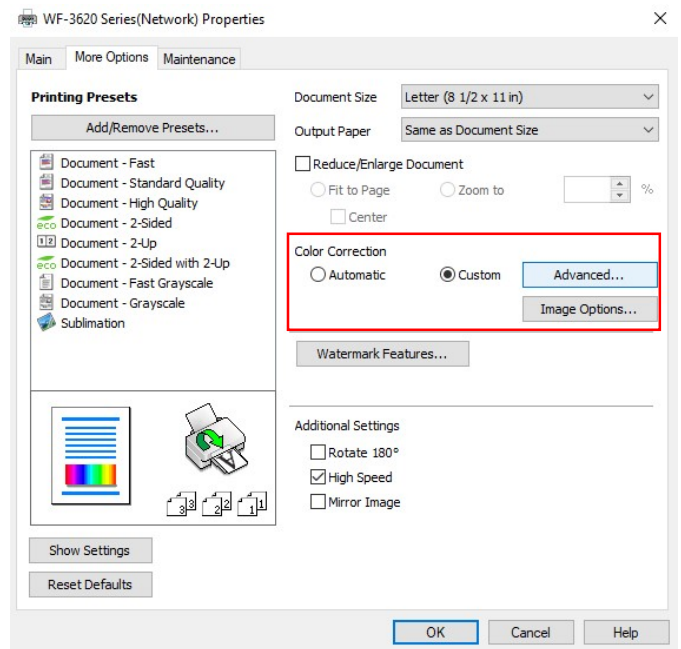


3. Select your printer, then press “preferences”



4. Choose your desired print settings (paper type, quality, mirrored for sublimation, etc.)

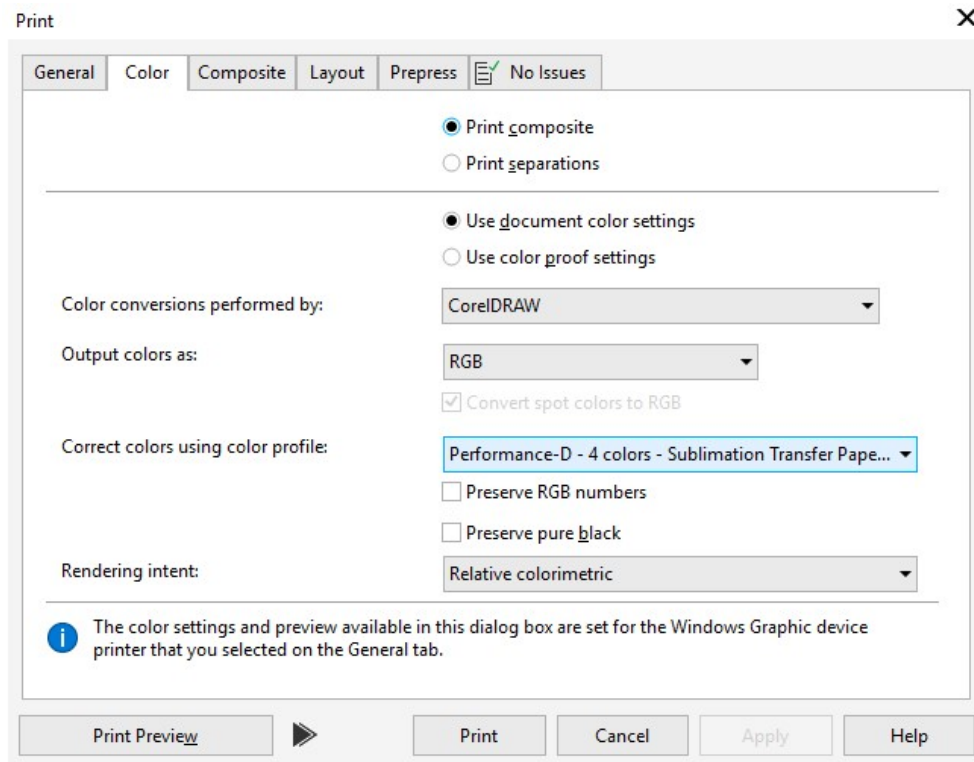
5. At the top, go to “More Options”. Under “Color Correction”, choose “Custom”, then click “Advanced”.



6. Choose the option “No Color Adjustment”, then click “OK”.
7. It is recommended that once you are done you add these settings as a preset for future uses.
8. Press OK to accept the printer preferences.
9. Back on Corel's Print window click the “Color” tab at the top.

10. Ensure you have the following settings:

- a. *Color conversions performed by:* CorelDRAW (or PHOTO-PAINT)
- b. *Output colors as:* RGB
- c. *Correct colors using color profile:* **SELECT THE PROFILE YOU WISH TO USE**
- d. *Preserve RGB numbers* must be **unchecked**
- e. *Preserve pure black* must be **unchecked**
- f. *Rendering intent:* **We recommend Relative colorimetric.** Choosing another setting will alter the look of the final result but not necessarily in a bad way.



11. Press print! The profile will be applied to your work as it is sent out to the printer.