

## Full Colour Mug Box - 11oz Durham

Tool No: 4817

Shape: Box

### Product Size -

Width: 319mm

Height: 412mm

### Artwork with Bleed -

Width: 325mm

Height: 418mm

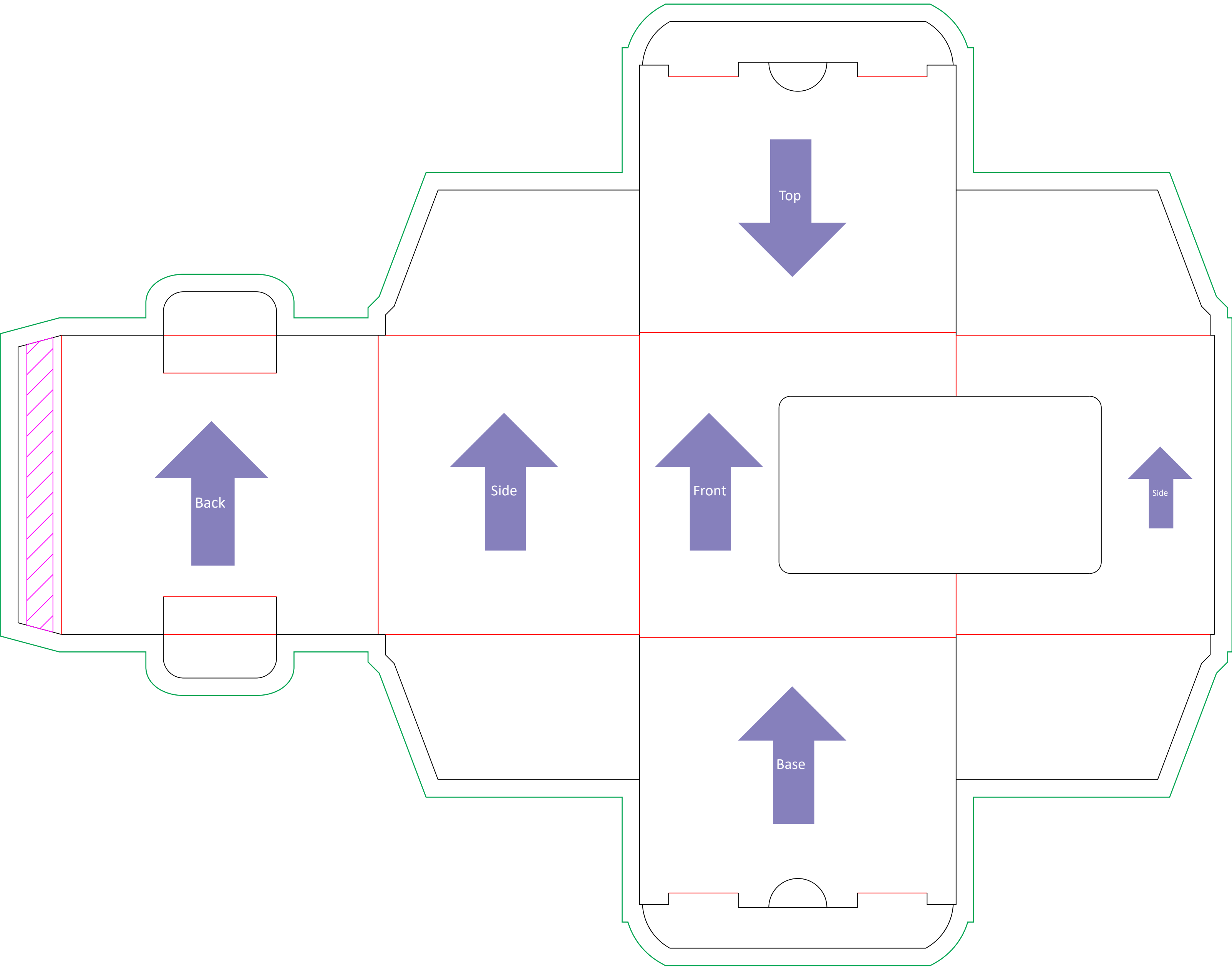
--- Please keep all live matter such as text, logos and other important images within this area.

Individual clipping masks for each panel. These are for use if design doesn't overlap sides. If in doubt about this aspect please call for advice.

Arrows show artwork orientation for each section. Text explains recommended print in flap areas.

This is a layered file, and is best used in **illustrator**. Place artwork on bottom layer named "Artwork".

This dieline represents a current finishing tool. Any alterations to this dieline may incur additional charges.



**Full Colour Mug Box with Window**  
**11oz Durham**

<b>Tool No:</b>	4766
<b>Shape:</b>	Box
<b>Product Size -</b>	
<b>Width:</b>	319mm
<b>Height:</b>	412mm
<b>Artwork with Bleed -</b>	
<b>Width:</b>	325mm
<b>Height:</b>	418mm

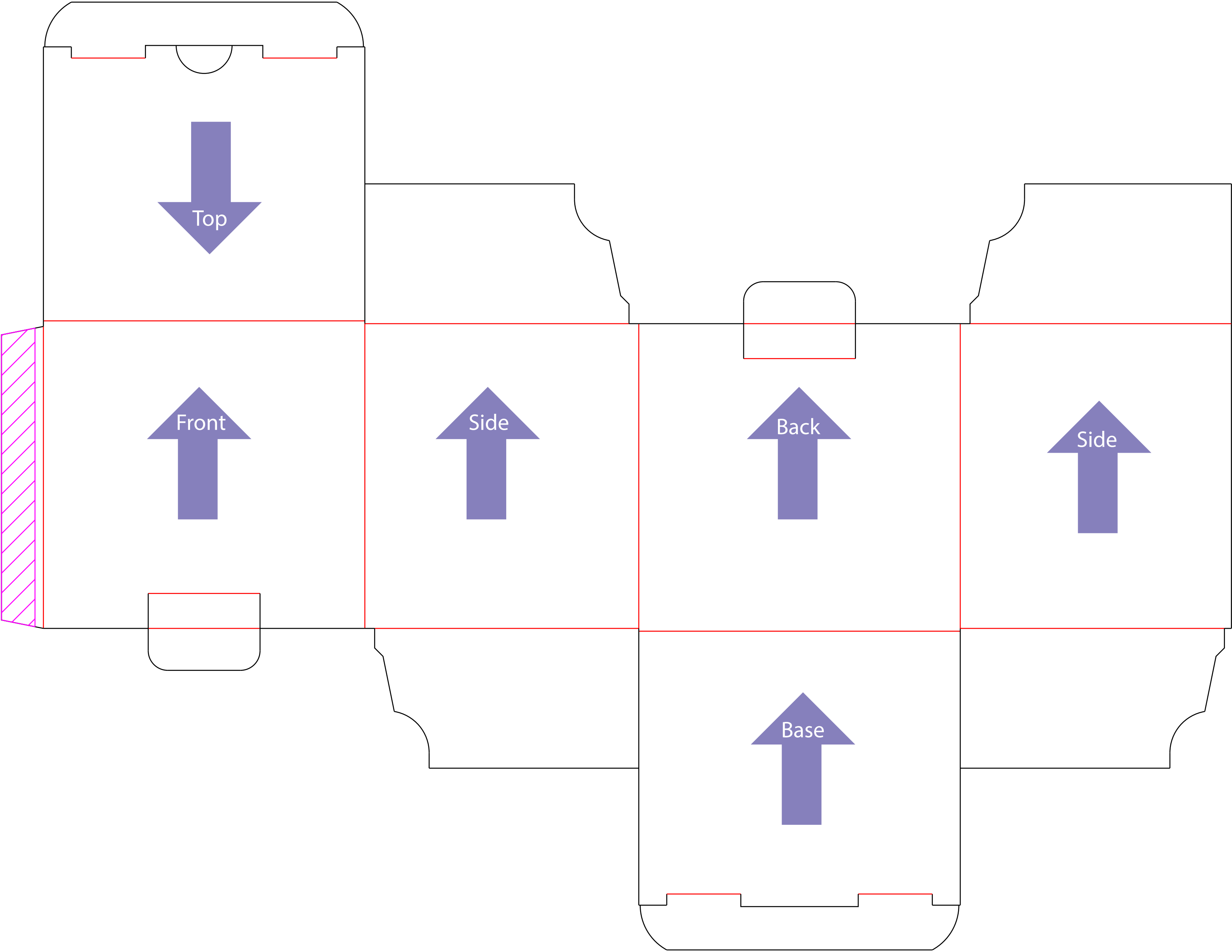
- - - Please keep all live matter such as text, logos and other important images within this area.

Individual clipping masks for each panel. These are for use if design doesn't overlap sides. If in doubt about this aspect please call for advice.

Arrows show artwork orientation for each section. Text explains recommended print in flap areas.

This is a layered file, and is best used in **illustrator**. Place artwork on bottom layer named **“Artwork”**.

**This dieline represents a current finishing tool.** Any alterations to this dieline may incur additional charges.



Full Colour Latte Mug Box  
2mm thick card

Tool No:	4758
Shape:	Box
Product Size -	
Width:	339mm
Height:	440mm
Artwork with Bleed -	
Width:	345mm
Height:	446mm

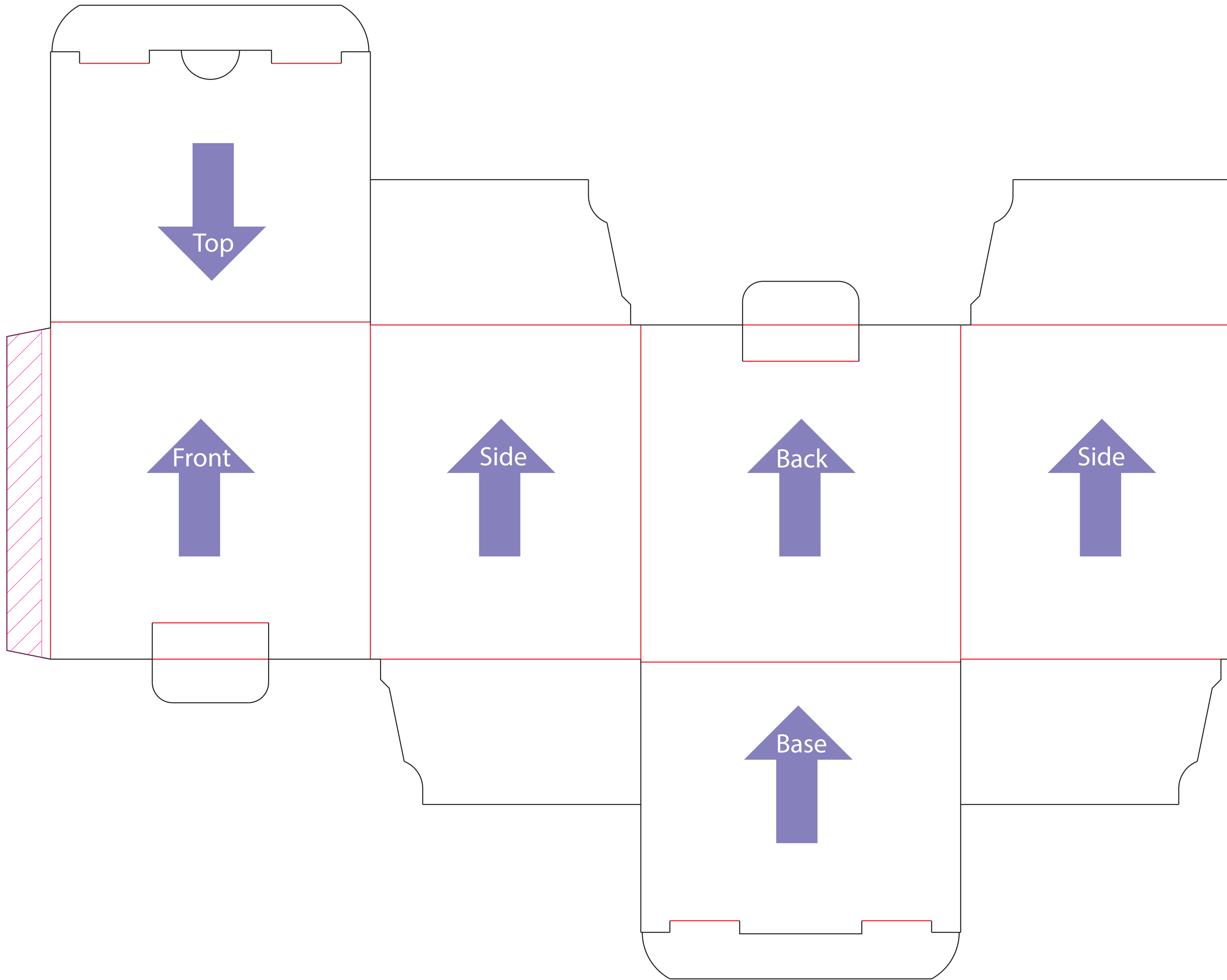
--- Please keep all live matter such as text, logos and other important images within this area.

Individual clipping masks for each panel. These are for use if design doesn't overlap sides. If in doubt about this aspect please call for advice.

Arrows show artwork orientation for each section. Text explains recommended print in flap areas.

This is a layered file, and is best used in illustrator. Place artwork on bottom layer named "Artwork".

This dieline represents a current finishing tool. Any alterations to this dieline may incur additional charges.



Full Colour Marrow Mug Box  
2mm Thick Card

Tool No:	4755
Shape:	Box
Product Size -	
Width:	335mm
Height:	420mm
Artwork with Bleed -	
Width:	341mm
Height:	426mm

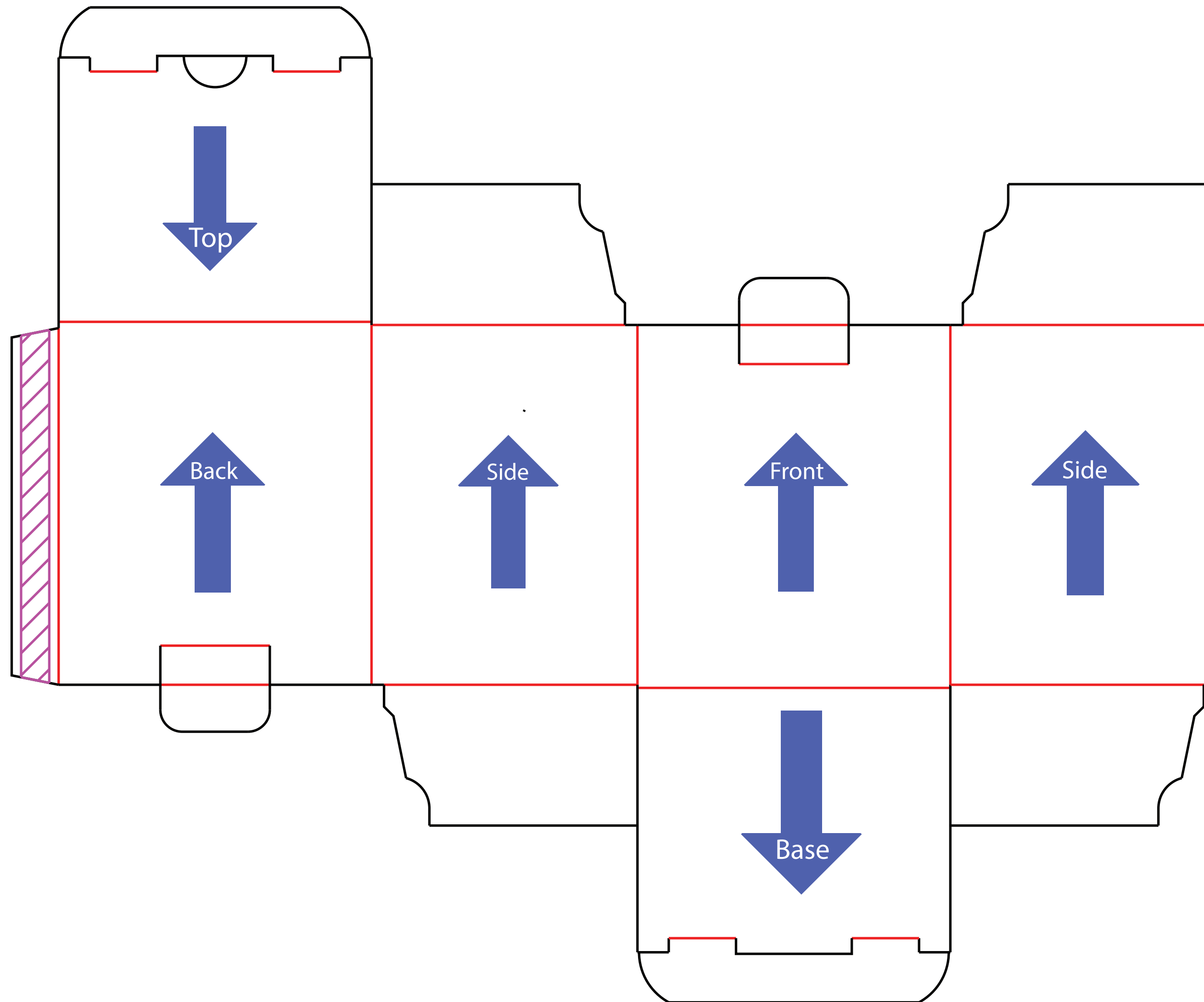
--- Please keep all live matter such as text, logos and other important images within this area.

Individual clipping masks for each panel. These are for use if design doesn't overlap sides. If in doubt about this aspect please call for advice.

Arrows show artwork orientation for each section. Text explains recommended print in flap areas.

This is a layered file, and is best used in illustrator. Place artwork on bottom layer named "Artwork".

This dieline represents a current finishing tool. Any alterations to this dieline may incur additional charges.



## Full Colour Windsor Mug Box 2mm Thick

Tool No: 4761  
Shape: Box

Product Size -  
Width: 318mm  
Height: 384mm

Artwork with Bleed -  
Width: 324mm  
Height: 390mm

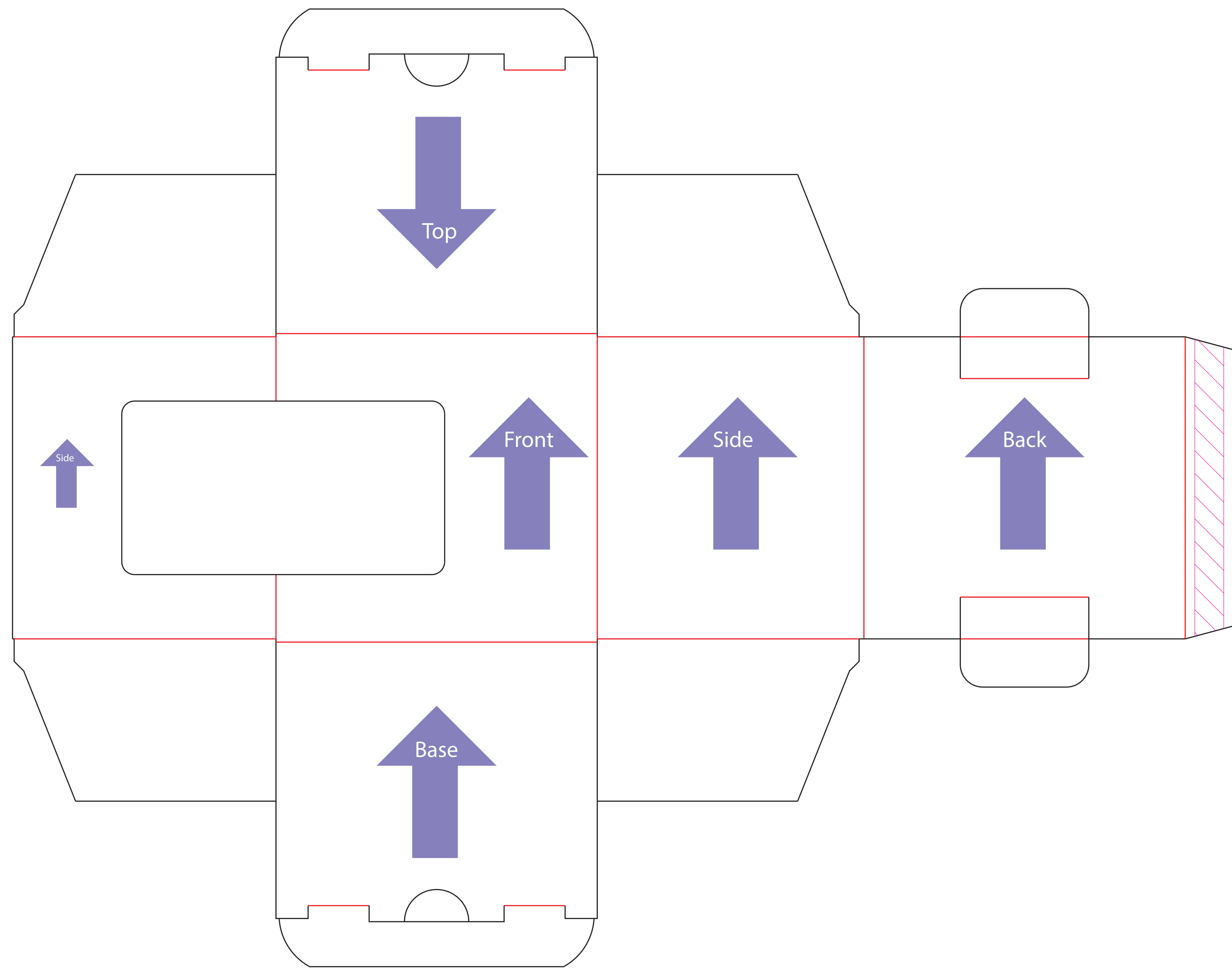
--- Please keep all live matter such as text, logos and other important images within this area.

Individual clipping masks for each panel. These are for use if design doesn't overlap sides. If in doubt about this aspect please call for advice.

Arrows show artwork orientation for each section. Text explains recommended print in flap areas.

This is a layered file, and is best used in illustrator. Place artwork on bottom layer named "Artwork".

This dieline represents a current finishing tool. Any alterations to this dieline may incur additional charges.



Full Colour Mini Marrow Mug Box  
With Window 2mm Thick Card

Tool No:	4796
Job No:	123465
Shape:	Box
Product Size -	
Width:	380mm
Height:	298mm
Artwork with Bleed -	
Width:	390mm
Height:	308mm

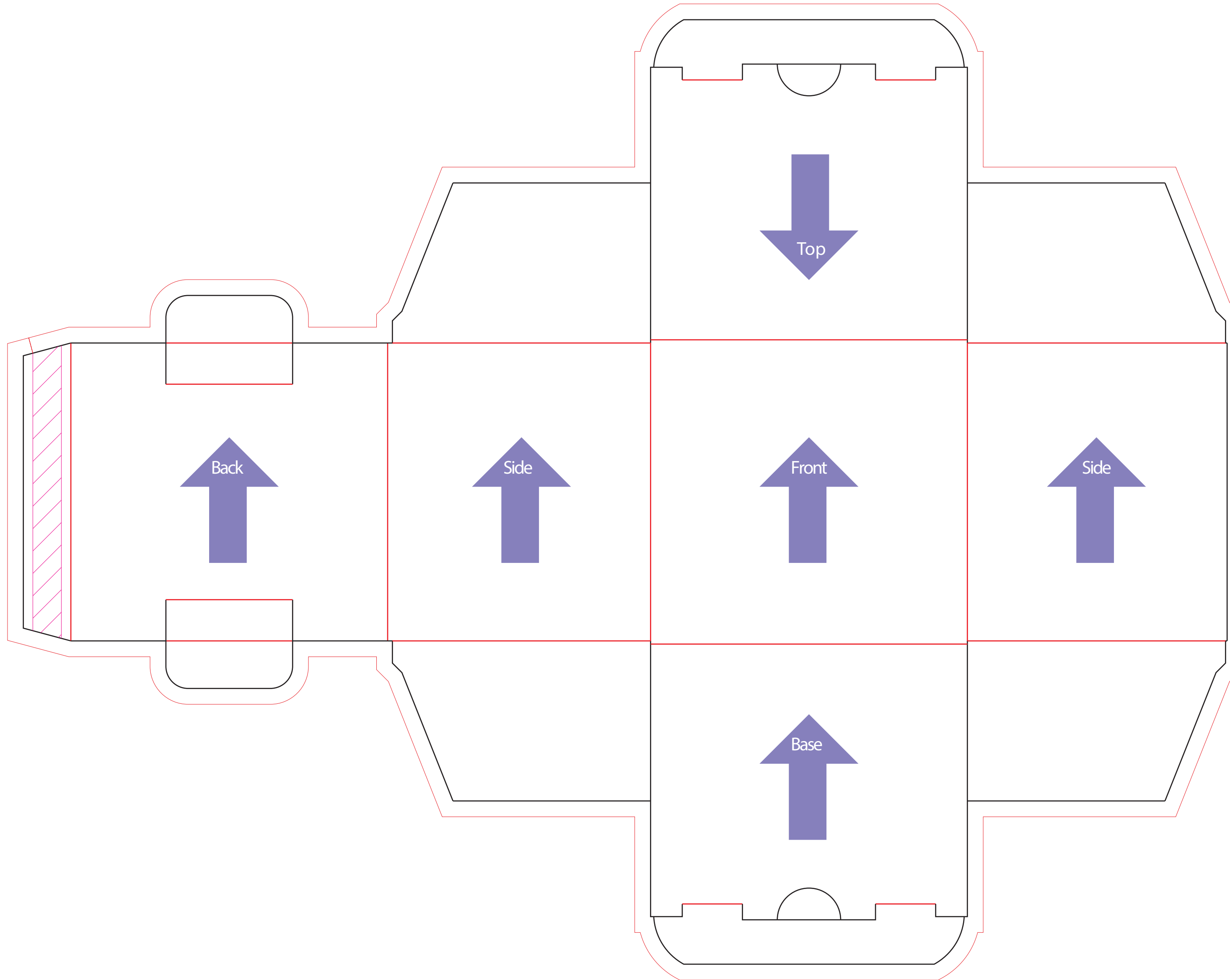
--- Please keep all live matter such as text, logos and other important images within this area.

Individual clipping masks for each panel. These are for use if design doesn't overlap sides. If in doubt about this aspect please call for advice.

Arrows show artwork orientation for each section. Text explains recommended print in flap areas.

This is a layered file, and is best used in illustrator. Place artwork on bottom layer named "Artwork".

This dieline represents a current finishing tool. Any alterations to this dieline may incur additional charges.



**Full Colour Mini Marrow Mug Box**  
**2mm Thick Card**

**Tool No:** 4785

**Job No:** ????

**Shape:** Box

**Product Size -**

**Width:** 380mm

**Height:** 298mm

**Artwork with Bleed -**

**Width:** 390mm

**Height:** 308mm

**--- Please keep all live matter such as text, logos and other important images within this area.**

**Individual clipping masks for each panel. These are for use if design doesn't overlap sides. If in doubt about this aspect please call for advice.**

**Arrows show artwork orientation for each section. Text explains recommended print in flap areas.**

This is a layered file, and is best used in **illustrator**. Place artwork on **bottom layer** named **"Artwork"**.

**This dieline represents a current finishing tool. Any alterations to this dieline may incur additional charges.**